

Release notes

Release content

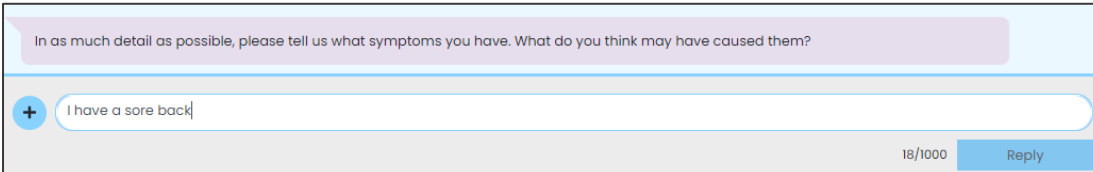
This release includes some important changes that are described in detail here:

This release comprises the following items:

JIRA ID	Area	Type (Feature or Bug)	Title	Description
Features				
PS-800	Patient request	Feature	Limit the number of characters that a patient can enter in each answer chatbot	<p>When a PATCHS patient is submitting a request or responding to a GP message, they can only type up to a maximum of 1000 characters.</p> <p>As the patient is typing, they can see how many of the characters they have typed.</p>
PS-940	Patient request	Feature	Confirmation message if a patient 'cancels' when submitting a request and haven't typed anything	<p>When a PATCHS patient is submitting a new request and they click on the 'cancel and start new request' link.</p> <p>Even if they haven't typed anything, they will see the message warning them that if they continue, they will lose any information they have entered.</p>

Screenshots

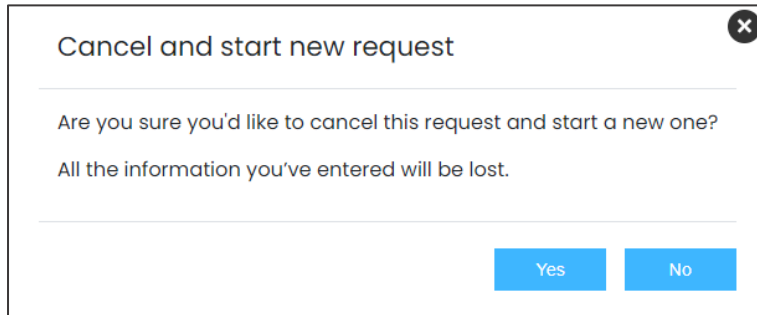
PS-800 Limit the number of characters that a patient can enter in each answer chatbot



The screenshot shows a chatbot interface with a text input field. The input field contains the text "I have a sore back|". To the right of the input field, the character count "18/1000" is displayed. A "Reply" button is visible to the right of the input field. Above the input field, there is a prompt: "In as much detail as possible, please tell us what symptoms you have. What do you think may have caused them?".

Answer chatbot showing character limit

PS-940 Confirmation message if a patient 'cancels' when submitting a request and haven't typed anything



Cancel and start new request message